



The Land Steward

Preserving open space since 1977 Vol. 1 No. 3 • Winter 2014

Watershed Conservation-Wetlands

This may surprise you but every faucet in Bethel is connected to a watershed.

On pages 4 and 5 is the second of a four-part series addressing the environmental services of our watersheds and, in particular, our wetlands.

BLT Protects an Additional 17.55 acres!

But first, we would like to introduce our newest preserve, the Dibble Brook Aviary, a 17.55-acre parcel of wetlands located along Walnut Hill Road, donated by fellow Bethelite, Jeffrey Bruno. The preserve is a partially forested swamp that is located in Dibble's Brook watershed and feeds an unnamed small aquifer. This preserve serves as an important migratory stop for birds and is visited by a variety of raptors. We hope to install a bird-viewing stand in 2015.

Within a half-mile of the Dibble Brook Aviary is the Walnut Hill Nature Preserve. Comprised of 4.5 acres of wetland meadows, this preserve is located atop the Dibble's Brook aquifer.

These two seemingly unimportant parcels of land provide a variety of ecological services, including feeding downstream waters, trapping floodwaters, recharging groundwater supplies, removing pollution and providing fish and wildlife habitat.



Board of Directors

Officers

PRESIDENT Don Warfield
VICE PRESIDENT Frank Borysiewicz
TREASURER John O'Neill
SECRETARY Roberta Warfield

Directors

Harold Boyer Judith Borysiewicz
Mary Ann Kulla Meaghan Nelson
Vincent Nero

BLT Mission:

The mission of the Bethel Land Trust is to conserve land in its natural state and to steward the land so that it is available for walking, contemplation, and enjoyment for people, and as unspoiled habitat for plants and animals.

The Land Steward is published by the land trust for its members, supporters and collaborating supporters.

Bethel Land Trust
P.O. Box 332
Bethel, CT 06801

Email:
bethel.land.trust.ct@gmail.com

Website:
www.bethellandtrust.org

203-512-5859



From the President

by Don Warfield

Don't it always seem to go that you don't know what you've got 'til it's gone? -- Joni Mitchell

I don't think anyone can argue with Joni's message, since we often take what we have for granted. Our land trust mission is to preserve what we have so that future generations can enjoy what we do. Once open space is gone, it is gone forever, and will be missed.

Huntington Park, Putnam Park, Overlook Park and Meckauer Park -- welcome as they are -- can create a false sense of security for Bethel residents, since these state and town-owned open spaces, as well as the Bethel Land Trust preserves, are protected oases. They enable residents in many different neighborhoods to walk out of their homes and go for a walk in the woods.

Many other of our town's open spaces are not protected from development. There are often conflicting demands on unprotected town lands, and private tracts can be sold at any moment to developers willing to pay the asking price.

Fortunately, the Bethel Land Trust has been blessed with homeowners that have deep connections to their land, and through their gifts of undeveloped properties to the Land Trust, have contributed priceless pieces of nature for the enjoyment of all who live in or visit Bethel. Not to be overlooked are the many people who have supported the BLT through the years with their time, energy and financial resources. Support from all of these constituencies is critical.

Protected lands support our community; they provide cleaner air and water, flood control, storm protection and recreation. These benefits are silent, but they are real. Land use, when determined wisely, can meet both our conservation and development needs. When a developer, such as Jeffrey Bruno, sets aside land from his project to donate a wetland gem to the Bethel Land Trust, we can readily see that conservation does not preclude development.

I invite you to visit our preserves and I promise that you will be astounded by the natural beauty right in our town. Unlike city sidewalks, you'll experience the seasonal rhythms. Take a peak at Mike's Pond, just off Chestnut Ridge Road (you don't even have to leave your car!), and you will see 20 or more mallards in the month of November, happily swimming around and dining on algae.

We will continue to seek out more special swatches, stitching them together into a patchwork, not unlike a New England heirloom quilt, that can be lovingly handed down from generation to generation in years to come.

What is ahead for 2015?

As the Bethel Land Trust enters its 38th year, preserve stewardship is our top priority. Our emphasis will be on combatting a serious challenge, controlling the various invasive plants, mainly Oriental Bittersweet, Japanese Barberry and Multi-flora rose that inhabit several of our preserves. Thanks to our volunteers and our key partnership with Bethel Power Equipment, we are well positioned to take on our invasive control program.

We will also be installing our Bethel Land Trust signs on all our preserves to indicate our ownership while making it easier for visitors to find.

And lastly, we will be rolling out our newly designed website thanks to the efforts and contributions of Nora O'Neill of Rainy Day Paperbacks.

The Limits of Wetlands

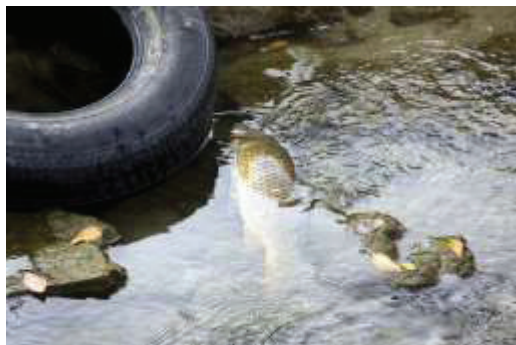
As amazing as wetlands are, and for all their ecological and human contributions, they do have their limits. A partially filled or otherwise damaged wetland is one that only partially meets its potential for flood control, shoreline stabilization, or groundwater recharge. A badly degraded wetland can lose its capacity to remove excess sediments, nutrients, and other pollutants, and can lose its habitat value for fish and wildlife. Wetlands may have tremendous capacities to provide environmental and human benefits, but they are not indestructible. If we want wetlands to continue to perform their ecological and human functions, then we have to do our part to protect them.

Human Activities That Affect Wetland Plant Communities

Land Clearing: Land clearing commonly occurs within the buffer area and sometimes directly in wetlands. These activities adversely affect the soil structure, the type of plants that grow in the area, and the density and overall health of the vegetation. These changes in turn affect wetlands' filtering capacity, flood control capabilities, water recharge, and wildlife habitat.

Non-Native Species Invasion: Introduction of non-native (exotic) plants has damaged or ruined ecosystems around the world. Exotic plants choke out native vegetation and alter the way wetlands function. This can affect sedimentation, nutrient use, habitat value, and more. These changes affect the benefits the wetlands provide.

Using Chemicals: Fertilizers and pesticides (plant and insect killers) represent a potential threat to wetlands. If they are used on adjacent or upstream lawns it is likely they will eventually enter local waterways and our wetlands. These chemicals alter the ecological balance of wetlands and can indirectly create many problems. For example, certain pesticides will eliminate important bugs and insects that work in the wetland. You might not notice the loss of these "pests," but perhaps an algae bloom will take over the pond because the insects and microscopic life that may normally have controlled the algae bloom are no longer there. There may also be a decrease in the bird population because their food source (the bugs and insects) is gone. Likewise, additional nutrients from fertilizers will cause extensive plant growth. These plants will eventually decay, cause oxygen depletion, and again result in a stagnant wetland. Our Mike's Pond is an example of chemicals gone wrong.



- This product is highly toxic to honeybees.”
- “This product is extremely toxic to fish and aquatic invertebrates.”
- “Do not apply where runoff is likely to occur.”

Dumping and Filling: Since wetlands have traditionally been viewed as wasted land they are often used as garbage dumps; old refrigerators and stoves, tires, bikes, and every other imaginable refuse can be found in wetlands.

Another common dumping practice is to throw fill dirt, lawn clippings, wood chips, and other yard waste into wetlands. Any kind of filling results in direct loss of the wetland's capacity to control flooding. The best thing to do with yard waste is to compost it. (Compost piles should be located far enough from your wetland or other surface water to ensure the nutrient-laden runoff water that drains the compost will not reach them.)

Storm water: A common source of pollutants to storm water is the area around the garage and driveway, where petroleum products and other chemicals are used for household and car maintenance projects. If you let these products drain onto the drive, they will eventually wash into local waterways and perhaps, end up in your drinking water supply.

Septic Systems: Septic systems also are a source of pollutants to wetlands. Seepage from your system may be polluting nearby areas, including our wetlands. To avoid this problem, have your septic system pumped and inspected every three to five years.

Recreation Overuse: Off road vehicles (ORVs) -- dirt bikes, all-terrain vehicles, and mountain bikes -- destroy soils, vegetation, and wildlife habitat within your wetland and its protective buffer strip.

For the environmental services that wetlands provide, it is essential to protect and conserve wetlands. Bethel faces a number of challenges to protecting wetlands. Development pressure, confusing Supreme Court cases and legal battles, climate change impacts and invasive species, plus the public's general lack of understanding about the value of wetlands hinder the ability to protect wetlands.

WINTER NEWSLETTER 2014-15



BETHEL LAND TRUST
P.O. Box 332
Bethel, Ct 06801
203-512-5859

Cut here and return with your donation to the address below.

Please consider becoming a member or making a contribution.

The Bethel Land Trust is a 501 (c) (3) nonprofit organization, and gifts are fully tax-deductible.

For Gift Memberships, Tributes, Land and In-Kind donations, please visit our website; bethellandtrust.org

Name: _____

Business: _____

Street: _____

Town: _____ State: _____ Zip: _____

E-Mail: _____ Phone: _____

ANNUAL MEMBERSHIP CATEGORIES

- Individual \$ 25
- Family \$ 50 - 99
- Naturalist \$100 - 499
- Trailblazer \$500 - 999
- Steward \$1,000 - +
- Other (Please Specify) _____

ANNUAL BUSINESS MEMBERSHIP

- Small business member \$50
- Small business supporter \$100
- Corporate member \$250
- Corporate supporter \$500
- Corporate sponsor \$1000
- Other (Please Specify) _____

100% of all donations go to support your local Land Trust and our efforts to maintain and protect your local environment.

Please make your check payable to: **Bethel Land Trust**

Mail this form and your tax deductible contribution to: **Bethel Land Trust, P.O. Box 332, Bethel, CT 06801**

OR you may go to our website and donate through that portal: **www.bethellandtrust.org**